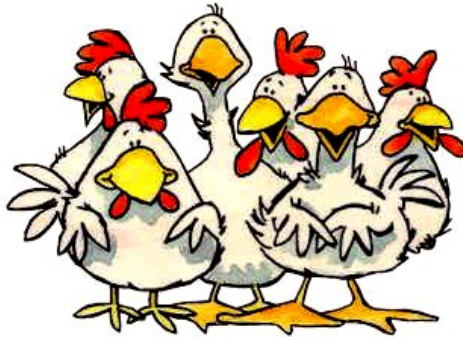


# POULTRY PROGRAM

Wallamba District  
Agricultural & Horticultural Ass Inc

112th ANNUAL SHOW  
Nabiac Showground  
Saturday 8th March, 2025



## Admission:

Adults		\$15
Children	(under 6 years of age - FREE)	\$ 5
Aged Pensioners	(must show concession card)	\$ 5
Family Pass (2 Adults 3 Children)		\$40

All Exhibitors and Competitors pay gate entry fee

Enquiries to: Mr Dwayne Kelly  
Telephone: 0407 749 516  
Email: secretary\_wdah@outlook.com  
Website: <http://nabiac.com/show>  
Showground PIC No NA992603

The Wallamba District Agricultural &  
Horticultural Assoc Inc

Would like to thank the following companies for  
their generous support of the Poultry Section of  
our Show



3 Grey Gums Road, Taree



1 Main Street, Cundletown



40a Muldoon Street, Taree

# **CONDITIONS OF ENTRY TO SHOWGROUND**

Nabiac Showgrounds is a designated **glass free** area, so no glass drink containers are to be brought onto the Nabiac Showgrounds.

The Wallamba District A & H Assoc. Inc. reserves the right to search for any prohibited item including, but not limited to, weapons, controlled, dangerous or illegal substances, alcohol (bottles or cans) which are expressly forbidden and subject to confiscation.

No alcohol is to be carried or consumed in the sideshow area. Alcohol must only be consumed in the designated licence area. Drunken, unruly offensive behaviour or fighting will result in immediate removal from the showground.

The speed limit for all vehicles within the showground area is 5 kilometres per hour which is walking speed.

## **IMPORTANT INFORMATION FOR ALL EXHIBITORS**

Any exhibitor intending to bring electrical equipment to the showground will be required to ensure all electric leads, tools, and appliances have been inspected and tagged by a licensed electrical contractor. This is a requirement of The Occupational Health and Safety act 1983.

**Please check all equipment meets this criterion before being brought onto the showgrounds.**

## **GRIEVANCE POLICY & SOCIAL MEDIA**

If you have a grievance with the Wallamba Show Society, it is considered respectful & proper practice to bring this to the attention of the Executive Committee in person or writing by way of letter or email.

The Wallamba Show society will not tolerate any malicious comments made on social media which includes, although not limited to, Facebook, Twitter, Instagram, blogs (which include blogs hosted by media outlets) forums, discussion boards, or groups and the like, which would ultimately bring the Wallamba Show Society into disrepute.

**IF ANY INSTANCES OCCUR, ACTION MAY BE TAKEN**

# WALLAMBA DISTRICT A & H ASSOCIATION INC.

President: Warren Gregory

Secretary:

Lyn Reid

Poultry Steward: Dwayne Kelly

Telephone available at Showground Friday, Saturday, Sunday **only** 0402 805 095

## RULES AND REGULATIONS

*Please read carefully*

1. All entries to Chief Steward, Mr Dwayne Kelly on 0407 749 516  
122 Pampoola Road, Pampoola. 2430 or dwaynetkelly@gmail.com
2. Entries close **Tuesday 4<sup>th</sup>, March, 2025**
3. Judging commences 8.30 am sharp Saturday 8th March, 2025
4. Decision of Judge is final.
5. Exhibits will be fed and watered.
6. Penning time 8.30 am on Saturday, 8th March, 2025
7. The Show Society reserves the right to join some classes together if insufficient entries are received
8. All exhibitors compete at their own risk. No responsibility will be accepted by the Association for damage or injury to persons or property. All exhibitors must sign waiver form.
9. **Minimum of 3 exhibitors** in a section before a major award is given.
10. *Free entry to Ground for Exhibitors with 10 or more Birds.  
Please retain your ticket for refund.*

**Prizes: 1st \$2, 2nd \$1**

**Entry fees: Adults \$1.50 Junior 50c**

**Champion Bird in Show - Ribbon & 'Cec Pullen Trophy'**

**Most Successful Exhibitor in Show -**

**'Peter Chowne Perpetual Trophy' - Sash plus \$20**

**Champion Ribbon for each Breed**

Champion Hardfeather Large	Sash plus \$25
Reserve Champion Hardfeather Large	Sash plus \$15
Champion Softfeather Large	Sash plus \$25
Reserve Champion Softfeather Large	Sash plus \$15
Champion Hardfeather Bantam	Sash plus \$25
Reserve Champion Hardfeather Bantam	Sash plus \$15
Champion Softfeather Bantam	Sash plus \$25
Reserve Champion Softfeather Bantam	Sash plus \$15
Champion Waterfowl	Sash plus \$20
Reserve Champion Waterfowl	Sash plus \$12
Champion Junior Exhibit	Sash plus \$15
Reserve Champion Junior Exhibit	Sash plus \$10

<b>SOFT FEATHER, LARGE</b>	<b>Cock</b>	<b>Hen</b>	<b>Ckl</b>	<b>Plt</b>
Australorp	1	2	3	4
Ancona	5	6	7	8
Hamburg Black	9	10	11	12
Langshan Black	13	14	15	16
Leghorn White	17	18	19	20
Leghorn AOC	21	22	23	24
Minorca	25	26	27	28
Orpington AC	29	30	31	32
Plymouth Rock	33	34	35	36
Rhode Island Red	37	38	39	40
Sussex AC	41	42	43	44
Silkie White	45	46	47	48
Silkie AOC	49	50	51	52
Wyandotte White	53	54	55	56
Wyandotte Colombian	57	58	59	60
Wyandotte Partridge	61	62	63	64
Wyandotte AOC	65	66	67	68
Barnavelder	69	70	71	72
Hampshire	73	74	75	76
AOC Sofffeather	77	78	79	80



***The Show Society reserves the right to join some classes together if insufficient entries are received***

***Accommodation for 350 birds  
Please enter early***

<b>HARDFEATHER, LARGE</b>	<b>Cock</b>	<b>Hen</b>	<b>Ckl</b>	<b>Pit</b>
Australian Game Black Red	81	82	83	84
Australian Game Pile	85	86	87	88
Australian Game ACO	89	90	91	92
Indian Game Dark	93	94	95	96
Indian Game Jubilee	97	98	99	100
OEG Pile	101	102	102	104
OEG Brown Red	105	106	107	108
OEG Black Red D/L	109	110	111	112
OEG Black Tailed Wheaten	113	114	115	116
OEG Blue Tailed Wheaten	117	118	119	120
OEG Blue Red	121	122	123	124
OEG Duckwing	125	126	127	128
OEG Grey	129	130	131	132
OEG Muff	133	134	135	136
OEG AOC	137	138	139	140
Pit Game Black	141	142	143	144
Pit Game AOC	145	146	147	148
Pit Game Black Muff	149	150	151	152
Pit Game ACO Muff	153	154	155	156
AOV Hardfeather	157	158	159	160

*The Show Society wishes to thank*



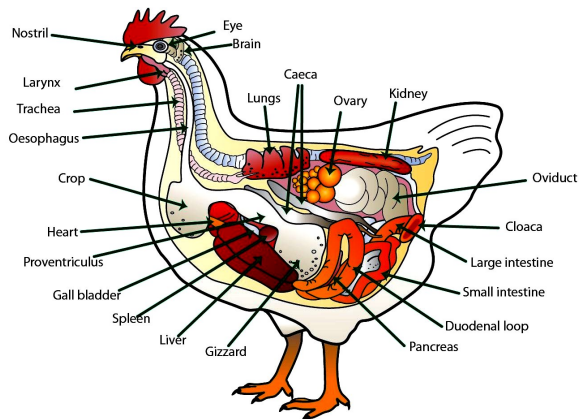
*for sponsoring the  
Poultry Champions & Reserve Champions  
and*

*the **Bulley** family for sponsorship towards the Poultry*

<b>SOFT FEATHER, BANTAM</b>	<b>Cock</b>	<b>Hen</b>	<b>Ckl</b>	<b>Plt</b>
Australorp	161	162	163	164
Ancona	165	166	167	168
Pekin Black	169	170	171	172
Pekin White	173	174	175	176
Pekin Buff	177	178	179	180
Pekin ACO	181	182	183	184
Plymouth Rock	185	186	187	188
Wyandotte White	189	190	191	192
Wyandotte Partridge	193	194	195	196
Wyandotte Columbian	197	198	199	200
Wyandotte AOC	201	202	203	204
Rosecombe AOC	205	206	207	208
Leghorn White	209	210	211	212
Leghorn AOC	213	214	215	216
Langshan AC	217	218	219	220
Minorca	221	222	223	224
Rhode Island Red	225	226	227	228
Sebright AC	229	230	231	232
Barbu d' Uccle AC	233	234	235	236
Barbu d' Anvers AC	237	238	239	240
AOC Sofffeather	241	242	243	244

***The Show Society wishes to thank MidCoast Council and our many sponsors and volunteers for their continuing support.***

*In particular we thank*  
**Tony Schubert,**  
*now retired,*  
*for his many years as*  
**Steward of the Poultry Pavilion**



<b>HARDFEATHER, BANTAM</b>	<b>Cock</b>	<b>Hen</b>	<b>Ckl</b>	<b>Plt</b>
Indian Game Dark	245	246	247	248
Indian Game Jubilee	249	250	251	252
Modern Game Black Red	253	254	255	256
Modern Game Pile	257	258	259	260
Modern Game D/Wing	261	262	263	264
Modern Game AOC	265	266	267	268
OEG Black	269	270	271a	271b
OEG Blue	272	273	274	275
OEG Black Red L/leg	277	278	279	280
OEG Clay/Wheaten	281	282	283	284
OEG Black Red D/leg	285	286	287	288
OEG Partridge L/leg	289	290	291	292
OEG Blue Tailed Wheaten	293	294	295	296
OEG Blue Red	297	298	299	300
OEG Duckwing	301	302	303	304
OEG Spangled	305	306	307	308
OEG Pile or white	309	310	311	312
OEG AOC	313	314	315	316
Pit Black	317	318	319	320
Pit AOC	321	322	323	324
Pit ACO Muff	325	326	327	328
Pit Black Muff	329	330	331	332
Australian Game Black Red	333	334	335	336
Australian Game AOC	337	338	339	340

## **WATERFOWL**

Cayuga	341	342
Indian Runner A.C.	343	344
Khaki Campbell	345	346
Mallard	347	348
Muscovy	349	350
Orpington	351	352
Pekin	353	354
Welsh Harlequin	355	356
A.O.V. (please state)	357	358





**JUNIORS U16**

Entry fee 50c. 1st \$2, 2nd \$1

**HARDFEATHER, LARGE**

	<b>Cock</b>	<b>Hen</b>	<b>Ckl</b>	<b>Ptl</b>
Australian Game AC	359	360	361	362
Old English Game AC	363	364	365	366
Pit Game AC	367	368	369	370
AV Hardfeather	371	372	373	374

**HARDFEATHER, BANTAM**

Modern Game AC	375	376	377	378
Old English Game Duckwing	379	380	381	382
Black Red	383	384	385	386
OEG AC	387	388	389	390
Pit Game	391	392	393	394
Australian Game AC	395	396	397	398
Indian Game AC	399	400	401	402
AOV Hardfeather	403	404	405	406

**SOFTFEATHER, LARGE**

Langshan	407	408	409	410
Silkie AC	411	412	413	414
Leghorn White	415	416	417	418
Leghorn AC	419	420	421	422
AOV Softfeather	423	424	425	426

**SOFTFEATHER, BANTAM**

Pekin AC	427	428	429	430
Leghorn AC	431	432	433	434
Ancona	435	436	437	438
Astralorp	439	440	441	442
Langshan	443	444	445	446
AOC Softfeather	447	448	449	450

**CHAMPION LARGE SOFTFEATHER prize**  
**CHAMPION BANTAM SOFTFEATHER prize**

*kindly sponsored by Tony Schubert*

**CHAMPION WATERFOWL**

*kindly sponsored by Lyn Reid*

**MOST SUCCESSFUL EXHIBITOR IN SHOW**

*Kindly sponsored by Lyn Reid*



The Society would also like to thank

## Wauchope Produce,

2/4 Young Street, Wauchope

## Taree/Wingham Produce CRT

59 Whitbread Street, Taree

28 Primrose Street, Wingham



**STOCKED UP AT  
LOW PRICES**

## Farm and Home

12 Nabiac Street, Nabiac NSW 2312

PH 6554 1204

[www.farmandhome.com.au](http://www.farmandhome.com.au)

Mon-Fri 8am - 5pm & SAT 8am - 2pm

## Taree Fisherman's Co-Op

4 Pitt Street, Taree  
for their support



## Buy a ticket in our big RAFFLE

Prizes (not yet in order)

A lovely quilt from Mid Coast Quilters

Vouchers from Bunning, Forster

Meal vouchers from Tuncurry Beach Bowling Club

A \$50 voucher from Lumpy's Nursery in Tuncurry

An R J Williams Leather Belt from Yarads in Forster

A wooden article from

Manning Great Lakes Woodworkers, Taree

A large basket of goodies from Nabiac Pharmacy

A basket of camping goods from

Great Lakes Caravans in Nabiac

Camping Goblets from

Manning Mowers & Chainsaws in Taree

And something from the Bike Museum in Nabiac

*At a dollar a ticket it is worth the risk!!*

## School Scarecrow Competition

The local schools are taking part again this year in making a scarecrow

Join the fun and vote for the one you like best.



They will be on show in the window of *Shellie's Country Wear* in Nabiac Street, Nabiac.

There will be a pad and pens and a bin to take the votes outside of the shop. Take a look and vote for your favourite—the winning school will get a Ribbon for their efforts



# Entertainment

Come over to the Ring Side of the grounds to see the **Beef Cattle** judging and watch, for a while, the many classes of the **Horse events**.

Down in the paddock behind them you will find the **Show Dogs** cimpeting and also the **Manning Lawn Mower Racers**

After the horse events are finished there will be mower races in the ring, a **tug-o-war** competition and old fashioned races for adults and kids (egg & spoon, 3 legged races and possibly sack races), all from yesteryear BUT FUN.

Join in and win a ribbon

You will find the **Woodchopping** competition at the back of the hall and the **Doggy High Jump** also in the ring after the horse events.

The day ends with an **Auto Soccer** game followed by the **Demolition Derby** and then the **FIREWORKS at 8:00pm**.

Enjoy your day with us