

HALL SCHEDULE

Wallamba District
Agricultural & Horticultural Assoc Inc

112th ANNUAL SHOW
Nabiac Showground
Saturday 8th March, 2025



Admission:

Adults		\$15
Children	(under 6 years of age - FREE)	\$ 5
Aged Pensioners	(must show concession card)	\$ 5
Family Pass	(2 adults 3 children)	\$40

All Exhibitors and Competitors pay gate entry fee

Enquiries Mary Webber
 0416 190 410
Secretary Showground Lane, Nabiac. 2312
Email: secretary_wdah@outlook.com

CONDITIONS OF ENTRY TO SHOWGROUND

Nabiac Showgrounds is a designated **glass free** area, so no glass drink containers are to be brought onto the Nabiac Showgrounds.

The Wallamba District A & H Assoc. Inc. reserves the right to search for any prohibited item including, but not limited to, weapons, controlled, dangerous or illegal substances, alcohol (bottles or cans) which are expressly forbidden and subject to confiscation.

No alcohol is to be carried or consumed in the sideshow area. Alcohol must only be consumed in the designated licence area. Drunken, unruly offensive behaviour or fighting will result in immediate removal from the showground.

The speed limit for all vehicles within the showground area is 5 kilometres per hour which is walking speed.

IMPORTANT INFORMATION FOR ALL EXHIBITORS

Any exhibitor intending to bring electrical equipment to the showground will be required to ensure all electric leads, tools, and appliances have been inspected and tagged by a licensed electrical contractor. This is a requirement of The Occupational Health and Safety act 1983.

Please check all equipment meets this criterion before being brought onto the showgrounds.

GRIEVANCE POLICY & SOCIAL MEDIA

If you have a grievance with the Wallamba Show Society, it is considered respectful & proper practice to bring this to the attention of the Executive Committee in person or writing by way of letter or email.

The Wallamba Show society will not tolerate any malicious comments made on social media which includes, although not limited to, Facebook, Twitter, Instagram, blogs (which include blogs hosted by media outlets) forums, discussion boards, or groups and the like, which would ultimately bring the Wallamba Show Society into disrepute.

IF ANY INSTANCES OCCUR, ACTION MAY BE TAKEN

WALLAMBA DISTRICT A & H ASSOCIATION INC

President:- Warren Gregory

Secretary:- Lyn Reid

Rules and Conditions

Please read carefully

- The name of the exhibitor must NOT be shown on the front of the exhibit
- All care will be taken of exhibits but the Committee takes no responsibility for any damage or theft to same
- On arrival all exhibitors must register with and pay entry fee to Entry Steward in Hall Foyer.
- All exhibits to be delivered to Showground between **7.30 am and 11.00 am Friday, 7th March, 2025**
- Hall doors close for Judging at **11.00 am** Friday. No further entry will be accepted.
- **JUDGES' DECISIONS ARE FINAL**
- Hall will re-open on Saturday, 8th March, 2025 at 8.00 am & close at 7.30pm
- Prize money may be collected from the Show Office **after 12.00 noon** on Show Day or between **9.30am & 11.00am** on Sunday, 9th
- Any prize money not collected Saturday or Sunday will be accepted as a donation to the Show Committee funds.
- *Exhibits may be collected between 9.00 am to 11.00 am Sunday.*
- A Ribbon will be awarded for the **MOST SUCCESSFUL EXHIBITOR** in the Hall.

ENQUIRIES RE EXHIBITS and EARLY ENTRIES
ring Mary Webber on 0416 190 410

Please advise Hall Stewards if your entry is for sale and indicate your price. The Association will retain 10% as commission.

*Wallamba District Agricultural & Horticultural Assoc Inc
Wishes to thank all of our
EXHIBITORS - SPONSORS - VOLUNTEERS
and the Wallamba Community for your continuing support
We hope you enjoy our 111th Annual Show*

Section 1 ART

Prizes: 1st \$50, 2nd \$20

Fees: \$4 per entry

- All Work **MUST** be for sale. The Association will retain 20% of monies received from any sold works.
- Paintings must be original and the unaided work of the entrant, executed within the last two years.
- Paintings must be ready for hanging with D rings & Wire or Cord
- ADULTS are limited to four (4) paintings over all sections and **NOT** previously shown at the Wallamba District Show.
- YOUNG ARTISTS are limited to two (2) paintings over all sections.
- Size of the painting must be not more than 320 cm around the outside edge of the frame, i.e. 70 cm x 90 cm.
- Any work deemed unsuitable will not be displayed and the Association reserves the right to display only sufficient entries for space available.
- Entries to be delivered to the Show Hall on Friday, 7th March, 2025 between **9:00am and 10:00am along with entry fees.**
Paintings can be collected between 9:30am and 11:00am on Sunday

Enquiries to Sue Oldfield on 0439 241 301

Entry forms:- send entry forms via text or email to

soldfield13@outlook.com

by Monday **3rd March** to enable labels to be done for art work,

CLASS A	Works on Hardboard or Canvas
CLASS B	Works on Paper (any medium)
CLASS C	Drawing (linear) (non water based, e.g. Charcoal, Pen, Ink, Pastel, Pencil, etc.)

PEOPLE'S CHOICE AWARD \$100.00

Kindly donated by Great Lakes Art Society Inc.



*The Great Lakes Art Society welcomes
new members to its classes and workshops*

*Call in and browse at the Gallery
34 Lakes Street Forster*

Enquiries to (02) 6557 2880

Section 2 PHOTOGRAPHY

Prizes: 1st \$5, 2nd \$3

Fees: \$1 per entry

Prizes sponsored by NABIAC PHARMACY

- Maximum 2 entries only per person in each class
- Photos to have been taken within the last 12 months
- Please **Do Not** frame photos
- Photographs to be mounted on **THIN** cardboard framing no more than 25mm. (1") wider than the photograph.
- Photographs must be no larger than 203mm x 152mm (6 "x 8").
- All entries must be marked, on back, with Section and Class.

***Perpetual Trophy for Champion Photograph
kindly donated by NABIAC PHARMACY
(Won last show by Elena Calvoli)***

COLOUR PHOTOGRAPHS - FILM AND DIGITAL

Class

1. Insects
2. Animals
3. Birds
4. Australian Landscape
5. Landscape
6. Seascape
7. Action
8. Portraiture
9. Trick or Novelty Shot
10. Plants or Flowers
11. Open - Any image



MONOCHROME PHOTOGRAPHS

12. Open - Any image

CREATIVE DIGITALLY MANIPULATED PHOTOGRAPHS

13. Open - Any image

STEWARDS CHOICE AWARD - SECTION 2

Section 3 COOKING

Prizes: 1st \$5, 2nd \$3

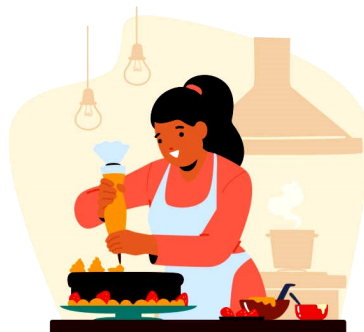
Fees: \$1 per entry

Prizes sponsored by WDA & H Assoc Inc LADIES COMMITTEE

- All entries to be placed on a firm plain base or firm paper plate & covered - oven bag only acceptable - for health reasons.
- Mock cream is acceptable
- No Lacquer to be sprayed on cakes

Class

1. **SPECIAL WALLAMBA CWA Prize 1st \$10, 2nd \$5,**
Boiled Fruit Cake
2. **SPECIAL WALLAMBA A & H Ass. Ladies Committee Prize**
1st \$30, 2nd \$20,
Boiled or Steamed Fruit Pudding
3. Half Pound Fruit
4. Sultana Cake
5. Plain Butter Cake
6. Date or Date & Walnut Cake
7. Chocolate Cake, iced
8. Carrot Cake, iced
9. Banana Cake, iced
10. Gluten Free Cake, any flavour, iced
11. Cooked Slice, any variety, plate of 6
12. Unbaked Slice, any variety, plate of 6
13. Lamingtons, plate of 6
14. Scones, Plain, plate of 6
15. Scones, Fruit, plate of 6
16. Jam Drops, plate of 6
17. Muffins, plate of 6
18. Anzac Biscuits, plate of 6
19. Monte Carlo Biscuits, plate of 6
20. Gluten Free Biscuits, any flavour, plate of 6
21. Patty/Cup Cakes, iced - no paper cups, plate of 6
22. Pikelets, plate of 6
23. Any Cake not on schedule
24. Any Biscuit not on schedule



COOKING contd.

PIES

Class

- 25. Apple, family size
- 26. Any variety pie, family size, not on schedule



BREAD

- 27. Homemade White Loaf
- 28. Homemade Sourdough Loaf
- 29. Homemade Specialty Loaf
- 30. Any Homemade bread variety not on schedule



SWEETS

- 31. Coconut Ice
- 32. Rocky Road
- 33. Any Sweets variety not on schedule



Remember to go and see our fabulous **Show Dogs** competing in the grounds just beyond and below the ring and Showground Lane gate - Aub Ferris Field

STEWARDS CHOICE AWARD - SECTION 3

CHAMPION RIBBON AWARDED TO BEST EXHIBIT IN SECTION 3

Section 4

JAMS, CONDIMENTS & PRESERVES

Prizes: 1st \$5, 2nd \$3

Fees: \$1 per entry

Prizes sponsored by WDA & H Assoc Inc. LADIES COMMITTEE

- Entries in excess of 2 years of age will be excluded
- Entries are to be clearly marked with type and year made.
- Entries must contain no less than 250 grams & no more than 500grams - fill to 1cm from top
- All jars/bottles must be glass. NO plastic.
- **Screw top jars only be used.**
- **No names, logos, cloth covers, paraffin seals, ties or labels with makers name or details on jars**

JAMS

Class

1. Peach
2. Melon, lemon & ginger
3. Strawberry
4. Raspberry
5. Apricot
6. Plum red
7. Tomato, any variety with or without any other flavour(s)
8. Orange Marmalade
9. Lemon Marmalade
10. Lime Marmalade
11. Three Citrus Marmalade
12. Grapefruit Marmalade
13. Mulberry
14. Lemon Butter
15. Passionfruit Butter
16. Butter, any other flavour
17. Fig
18. Jelly Jam
19. Any other variety not on schedule



- ### PRESERVES
- 20.. Fruit any variety
 21. Vegetables any variety
 22. Fruit or Vegetable(s) in brine



Section 4 contd.

CONDIMENTS

***Note: Sauces must be in bottles**

23. Pickle, any variety
24. Sweet Mustard Pickle
25. Relish, any variety
26. Chutney, any variety
27. Asian Chutney
28. Plum Sauce
29. Tomato Sauce
30. BBQ Sauce
31. Oil - decorated
32. Vinegar - decorated
33. Any variety not on schedule
34. Nut Pastes & Spreads, any variety
35. Sweet Chilli Sauce



The Wallamba District Agricultural & Horticultural Assoc. Inc Committee hopes everyone who joins us on SHOW Day has a great time.

Please observe the rules of the Society, noted around the grounds, and don't bring any glass to the grounds.

If you have any questions or need directions to an event, or need to contact a committee member, there will be Volunteers on the grounds wearing **Yellow** or **Pink** vests for easy identification, to help you.

If you need to know where or the time they are on, you can collect a sheet with that information on it from the office (next to the Library) or at the ticket boxes.

Hope to see you there

STEWARDS CHOICE AWARD - SECTION 4

CHAMPION RIBBON AWARDED TO BEST EXHIBIT IN SECTION 4

Section 5 HANDICRAFT

Prizes: 1st \$5, 2nd \$3

Fees: \$1 per entry

Prizes sponsored by NABIAC NOOK

- All entries in this section must have been completed within the past two (2) years and not have won previously at the Wallamba District Show.
- Any article which has been worn or used and cleaned, may not be eligible for judging.
- There must be NO VISIBLE identification on any article

Class

1. Hand Woven article
2. Cushion, patchwork, machine made
3. Cushion, patchwork, hand made
4. Cushion, creative or novelty
5. Felted Apparel
6. Felted Accessories
7. Felting, any other article not in Schedule
8. Quilt, Patchwork - machine made
9. Quilt, Patchwork - combined hand and machine made
10. Quilt, Patchwork - appliqué
11. Quilt, lap or cot
12. Quilt, any variety not on Schedule
13. Patchwork, any article not on Schedule
14. Quilted article - machine made
15. Quilted article - combined hand and machine made
16. Appliqued article - machine made
17. Appliqued article - hand made (must be completely hand stitched).
18. Appliqued article - combined hand and machine made
19. Wall Hanging - with visible means of hanging
20. Bag, any textile medium
21. Bookmark - any textile medium
22. Any Kitchen Napery, ie Apron, Pot Holder, Tea towel,
23. Any totally hand sewn article not in Schedule
24. Any machine made article not in Schedule
25. Any article made from Recycled material



\$25 Vouchers for winners of classes
2,3,4



STEWARDS CHOICE AWARD - SECTION 5

CHAMPION RIBBON AWARDED TO BEST EXHIBIT IN SECTION 5

Section 6 EMBROIDERY

Prizes: 1st \$5, 2nd \$3

Fees: \$1 per entry

- All entries in this section must have been completed within the past two (2) years and not have won previously at the Wallamba District Show
- Any article which has been worn or used and cleaned, may not be eligible for judging.
- There must be NO VISIBLE identification on any item

Class

1. Table Centre or Runner
2. Cross Stitch article
3. Counted Cross Stitch article, even weave fabric
4. Counted Cross Stitch article on AIDA
5. Coat hanger, hand embroidered
6. Cushion, Embroidered
7. Creative Embroidery article
8. Candlewick work article
9. Computer Generated, Machine Embroidery article
10. Ribbon Embroidery article
11. Wool Embroidery article
12. Beaded Embroidery article
13. Embroidered Wall hanging
14. Needlepoint (tapestry), long stitch article
15. Any embroidered article not on Schedule



STEWARDS CHOICE AWARD—SECTION 6

CHAMPION RIBBON AWARDED TO BEST EXHIBIT IN SECTION 6

Section 7 KNITTING

Prizes: 1st \$5, 2nd \$3

Fees: \$1 per entry

- All entries in this section must have been completed within the past two (2) years and not have won previously at the Wallamba District Show
- Any article which has been worn or used and cleaned, may not be eligible for judging.

Class

1. Baby's jacket
2. Baby's frock
3. Child's jumper, cardigan or vest
4. Ladies' Jumper, cardigan or vest
5. Rug
6. Shawl
7. **SPECIAL CWA SPECIAL Prize 1st \$10, 2nd \$5**
Pure wool article
8. Acrylic article
9. Cotton article
10. Homespun wool article
11. Tea Cosy
12. Edged Tea towel/Towel
13. Beaded doll
14. Doll, suitable for child
15. Doll, decorative
16. Coat hanger
17. Any knitted article not on Schedule



Rocks Kidz

33 Wharf St., Forster - 6557 6655
Sponsoring Classes 1, 3, 4, 5, 6, 11

STEWARDS CHOICE AWARD - SECTION 7

CHAMPION RIBBON AWARDED TO BEST EXHIBIT IN SECTION 7

Section 8 CROCHET

Prizes: 1st \$5, 2nd \$3

Fees: \$1 per entry

- All entries in this section must have been completed within the past two (2) years and not have won previously at the Wallamba District Show.
- Any article which has been worn or used and cleaned, may not be eligible for judging.
- **Any fibre unless specified**

Class

1. Baby's outfit, 3 piece
2. Baby's jacket
3. Child's jumper, cardigan or vest - wool or acrylic
4. Ladies jumper, cardigan or vest - wool or acrylic
5. Doily to 25 cm
6. Doily over 25 cm, fine cotton (equivalent to Semco 40)
7. Doily over 25 cm
8. Rug, large, wool or acrylic
9. Rug, small, wool or acrylic
10. Shawl, wool or acrylic
11. Edged Tea or Hand Towel
12. Table Cloth
13. **SPECIAL CWA Prize 1st \$10, 2nd \$5**
Pure wool article
14. Acrylic article
15. Cotton article
16. Tea Cosy
17. Coathanger
18. Bead Crochet
19. Soft Doll or Toy
20. Any article not on schedule



Rocks Kidz

33 Wharf St., Forster 6557 6655

Kindly sponsoring

Classes 1, 2, 3, 4, 8, 9, 10

STEWARDS CHOICE AWARD - SECTION 8

CHAMPION RIBBON AWARDED TO BEST EXHIBIT IN SECTION 8

Section 9 HOBBIES

Prizes: 1st \$5, 2nd \$3

Fees: \$1 per entry

- All entries in this section must have been completed within the past two (2) years and not have won previously at the Wallamba District Show

Class

1. Painted Porcelain/China, any article
2. Mosaic, any article
3. Scrapbooking, any article
4. Creative Card
5. Quilling, any article/s
6. Pottery, any article
7. Woodwork, turned
8. Woodwork, carved
9. Woodwork, any article
10. Folk & Decorative Art, any article
11. Lead lighting, any article
12. Jewellery, any medium
13. Jewellery, any medium - fantasy
14. Beadwork, any article
15. Lampshade, any medium
16. Christmas decorations, hanging, any article
17. Christmas decorations, any article
18. Bead, handmade
19. Glass, slumping
20. Handmade Flowers, any medium
21. Hat or Fascinator
22. Soap, Handmade
23. Candle, Handmade
24. Eco Printing
25. Leatherwork, any article
26. Bookmark, any article
27. Any article not on Schedule
28. Any article made from Recycled material



STEWARDS CHOICE AWARD - SECTION 9

CHAMPION RIBBON AWARDED TO BEST EXHIBIT IN SECTION 9

Section 10

DOLLS, BEARS & ANIMALS

Prizes: \$1st \$5, 2nd \$3

Fees: \$1 per entry

- All entries in this section must have been completed within the past two (2) years and not have won previously at the Wallamba District Show
- Unless stated, items do not have to be suitable for children.

Class

1. Doll's clothes, fabric, any type or size
2. Soft toy, any material
3. Soft toy or doll, rag or cloth, suitable for small child or baby
4. Toy or doll, ornamental, rag or cloth
5. Doll, best dressed
6. Doll, rag or cloth
7. Teddy bear, knit or crochet
8. Teddy Bear, fur
9. Teddy Bear, any medium
10. Animal, any medium
11. Fantasy doll or animal
12. Doll, painted



Nabiac Second Chance "Op-Shop"

Nabiac Street,
Nabiac.

If you are new to the community/area, you will find the "Op-Shop" next to the Pre-School, just down the road from the Old Bank Building.

It is situated in Nabiac's "Old Hospital" and has been serving the community since 1993.

It is run by friendly local volunteers who will assist you with finding a brilliant selection of clothing for all of the family, household goods, games & puzzles.

Out the back there is a big shed filled with furniture, CDs, books, kitchen wares, etc.

Come along and
BROWSE & BUY

Open Monday to Friday, 9:00am to 12 noon & Saturday 9:am to 1:00pm.

STEWARDS CHOICE AWARD SECTION 10

CHAMPION RIBBON AWARDED TO BEST EXHIBIT IN SECTION 10

Section 11 FLOWERS

Prizes: 1st \$5, 2nd \$3

Fees: \$1 per entry

Prizes sponsored by WDA & H Assoc. Inc LADIES COMMITTEE

- All flowers must be in a vase unless otherwise stated. Entrants must provide own container or vase.
- A 'collection' means not less than 6 blooms unless otherwise stated.
- NND means 'Not Necessary Distinct' ie *can be same or other variety*
D - Distinct means each bloom must be different

Class

1. Nerines, collection
2. Carnations, collection
3. Geranium or Pelargonium, collection
4. Orchid, Crucifix, collection
5. Zinnias, collection
6. Native Flowering Shrubs & Foliage, collection
7. **SPECIAL KRAMBACH GARDEN LOVERS Prize**
1st \$15, 2nd \$10, 3rd \$5
Garden Flowers, collection
8. Proteas, collection
9. Waterlily, 1 cut
10. Any cut flower collection not on schedule



Krambach Garden Lovers

Meets the last Monday of the month

New members welcome

Contact

Secretary - Kathy Winter

0470 584 689

STEWARDS CHOICE AWARD - SECTION 11

CHAMPION RIBBON AWARDED TO BEST EXHIBIT IN SECTION 11

Section 12 FLORAL ART

Prizes: 1st \$5, 2nd \$3

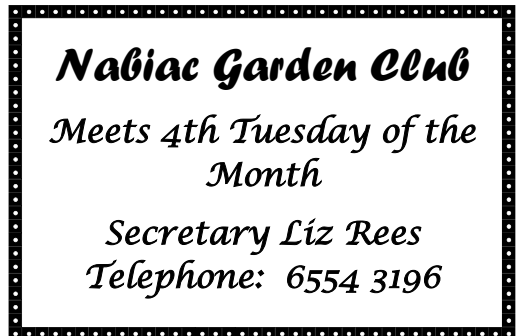
Fees: \$1 per entry

Prizes sponsored by WDA & A Assoc. Inc LADIES COMMITTEE

- 'Embellishment' - to adorn, decorate, garnish, beautify or to add to.
- All arrangements to be presented in container
- Heights, where mentioned, must be adhered to

Class

1. **SPECIAL WALLAMBA CWA Prize 1st \$5, 2nd \$3, 3rd \$2**
Best arrangement of garden flowers, any container, embellishment optional
2. **SPECIAL NABIAC GARDEN CLUB Prize 1st \$10, 2nd \$5, 3rd \$2**
Best arrangement featuring fruit and flowers, any container, embellishment optional
3. Any foliage arrangement
4. Table centre, any colours, not to exceed 25cm in height, 40cm width
5. Oriental inspired, any content
6. Cottage arrangement in basket
7. Arrangement of flowers, any colour, embellishment optional
8. Miniature arrangement, not higher than 10cm, any container



STEWARDS CHOICE AWARD - SECTION 12

CHAMPION RIBBON AWARDED TO BEST EXHIBIT IN SECTION 12

Section 13

FLOWERING PLANTS & FOLIAGE PLANTS IN POTS OR BASKETS

Prizes: 1st \$5, 2nd \$3

Fees: \$1 per entry

Prizes sponsored by WDA & A Assoc. Inc LADIES COMMITTEE

Class

1. Begonia, foliage/flowering
2. Peperomia
3. Coleus
4. Best foliage plant
5. Collection of 3 foliage plants
6. Cacti/Succulent, single in pot
7. Succulent, collection in pot
8. Maiden Hair fern
9. Fern, any variety
10. Best hanging basket, foliage
11. Best hanging basket, flowering
12. Best hanging basket, annuals/assorted/single variety
13. Bromeliad, flowering
14. Bromeliad, not flowering
15. Bonsai
16. Best original plant, tree, flower grown on/in natural base, e.g. wood, stone, rock, etc.
17. Orchid, potted
18. Best flowering plant not on schedule
19. Best potted annuals - assorted



SPECIAL AWARD \$35

Compliments of KINspirit IRIS & Daylily Farm

Frost Hardy, Drought Tolerant & Water Loving IRIS

Daylilies Succulents Fresh Cut Flowers

Gift Presentations and Vouchers Available

Visitors welcome by appointment

Phone Lyz 6559 1275

Email: lyz@kjspirit.com.au

Website: www.kjspirit.com.au



STEWARDS CHOICE AWARD - SECTION 13

CHAMPION RIBBON AWARDED TO BEST EXHIBIT IN SECTION 13

Section 14 ROSES

Prizes: 1st \$5, 2nd \$3

Fees: \$1 per entry

Prizes sponsored by WDA & H Assoc. Inc LADIES COMMITTEE

- An exhibition style rose usually has lots of petals, a high centre and must only have one (1) bloom, to a stem. Side buds (if they occur) are removed early to allow the centre bud to mature.
- Entrants must provide their own container or vase
- Oasis is acceptable
- NND means Not Necessarily Distinct ie can be same or other variety
- D - Distinct, means different variety
- ALL ROSES MUST BE NAMED.

Class

1. Rose exhibition, Red - 1 stem
2. Rose exhibition, Yellow - 1 stem
3. Rose exhibition, Pink - 1 stem
4. Rose exhibition, Any Colour - 1 stem
5. Rose Old English Style, e.g. David Austin type - 1stem
6. Rose exhibition, D - 2 stems
7. Rose exhibition, NND - 3 stems
8. Rose decorative, NND, side buds allowed - 3 stems
9. Rose exhibition, 3 stages / 3 stems in 1 container. Must be same variety, bud to full bloom
10. Full bloom roses in 1 container, NND - 3 stems
11. Cluster flowered roses (floribunda) in 1 container, NND 1 to 4 stems
12. Miniature roses in 1 container, NND - 1 to 3 stems
13. Roses in 1 container, NND - unlimited stems, not less than 6

STEWARDS CHOICE AWARD - SECTION 14



Special Prize of \$10 goes with the
Champion Ribbon
Sponsored by

KRAMBACH GARDEN LOVERS

CHAMPION RIBBON AWARDED TO BEST EXHIBIT IN SECTION 14

Section 15 DAHLIAS

Prizes: 1st \$5, 2nd \$3

Fees: \$1 per entry

Prizes sponsored by WDA & H Assoc. Inc LADIES COMMITTEE

- Exhibition cactus and fimbriated cactus types 160 mm or under
- Waterlily, Collarette, Ball, Anemone, Arochid, Stella and single types under 160 mm
- Pompon under 50 mm
- Blooms over 160 mm to be staged 1 per vase
- Blooms under 160 mm to be staged 3 per vase unless otherwise stated
- Diameter sizes: -
Large, over 210 mm
Medium, 160 mm and under 210 mm
Small, 120 mm and under 160 mm
Miniature, under 120 mm
- Judging points:- Total 110 points - Form 40, Stem 15, Condition 25, Colour 10, Size 5, Staging 5

Class

- | | | |
|-----|---------------------------------|--------------------------------|
| 1. | Large, decorative | NND - 3 blooms |
| 2. | Large, decorative | 1 bloom |
| 3. | Medium, decorative | NND - 3 blooms |
| 4. | Medium, decorative | 1 bloom |
| 5. | Small, decorative | 1 vase 3 blooms - same variety |
| 6. | Small, decorative | 1 vase 3 blooms - distinct |
| 7. | Miniature, decorative | 1 vase 3 blooms - same variety |
| 8. | Miniature, decorative | 1 vase 3 blooms - distinct |
| 9. | Large cactus | NND - 3 blooms |
| 10. | Large cactus | 1 bloom |
| 11. | Medium cactus | NND - 3 blooms |
| 12. | Small cactus | 1 vase 3 blooms - same variety |
| 13. | Small cactus | 1 vase 3 blooms - distinct |
| 14. | Exhibition cactus, over 160 mm, | NND - 1 bloom |
| 15. | Exhibition cactus, over 160 mm, | NND - 3 blooms |

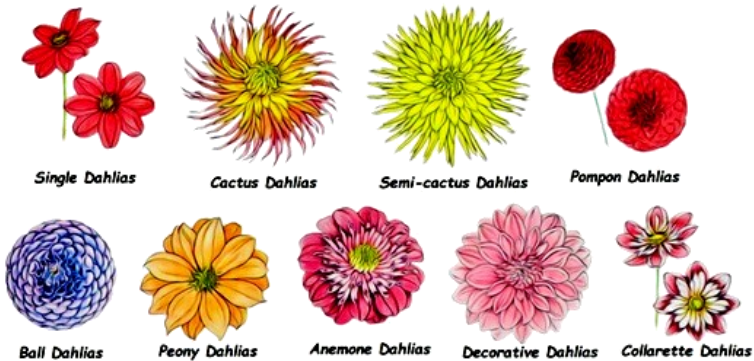


Aitara Cariss



DAHLIAS Contd.

- | | | |
|-----|-----------------------------------|--------------------------------|
| 16. | Waterlily | 1 vase 3 blooms - same variety |
| 17. | Waterlily | 1 vase 3 blooms - distinct |
| 18. | Pompon | 1 vase 3 blooms - same variety |
| 19. | Pompon | 1 vase 3 blooms - distinct |
| 20. | Ball type, NND | 1 vase 3 blooms |
| 21. | Collarette, NND | 1 vase 3 blooms |
| 22. | Any other type, any size | 1 bloom |
| 23. | NOVICE - Any of the above classes | |



*The Nabiac Farmers Market is held on the
LAST SATURDAY of each month from 8 am to
 12 noon at the Nabiac Showgrounds (except December)*

*Local fresh produce, value-added gourmet goodies and
 local craft. Bring family and friends and come along for
 a chat, a bite to eat and good old fashioned shopping.*



For enquiries - nfmcoordinator@gmail.com

STEWARDS CHOICE AWARD - SECTION 15

CHAMPION RIBBON AWARDED TO BEST EXHIBIT IN SECTION 15

WALLAMBA DISTRICT A & H ASSOC. INC.
thanks its sponsors & supporters & asks that you support them

A SPLASH OF COLOUR

BARB'S HAIR CARE –B NABIAC

BARBERIE MACHINERY - TUNCURRY

BEARS TYREPOWER - TUNCURRY

BELINDA'S BEAUTY SALON - NABIAC

COASTAL COMPUTING - TAREE

FOODWORKS - NABIAC

FORREST FRESH DOMESTIC ASSISTANCE

FORSTER ARTS & CRAFTS - FORSTER

FORSTER TUNCURRY BOARDING KENNELS & CATTERY

GREAT LAKES ART SOCIETY - FORSTER

GREAT LAKES CARAVAN - NABIAC

GRIFFO'S GOURMET BUTCHERY - NABIAC

HARCOURTS NABIAC REAL ESTATE - NABIAC

HKL LANDSCAPE SUPPLIES - NABIAC

KIMSCLAN DOG GROOMING

NABIAC BUTCHERY

NABIAC FARMERS MARKET

NABIAC HOTEL

NABIAC MOTORS

NABIAC NOOK

NABIAC PHARMACY

STEELE PROPERTIES - NABIAC

THE OLD BANK CENTRE - NABIAC

TOTAL CARAVAN REPAIRS - NABIAC

SCARECROW COMPETITION

Check out the Scarecrows in Shellie's Country Wear's shop window in NABIAC Street, NABIAC

The Local Schools are competing again to see which school's children can create the best SCARECROW this year.

It is up to you, the public, to go and vote for the one you like best. You just have to put the number of the scarecrow you prefer - there will be 3 - on a piece of paper and drop it in the litter bin provided (paper and pencils are also available next to the bin)



The winner will be announced at the Show's Official Opening about 2.30pm on Saturday 8th March,

The Local NABIAC Shops are also joining in the fun and doing up their windows with an agricultural themed display, They will also be judged to see who has the best window to match the feeling of Show Day.

Keep an eye out for when they are done later in the month, all aimed at making this year's show a great one with a good 'Show' feeling'

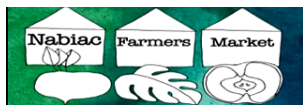
Come and enjoy the day with your family and friends!

the Woodchopper's are back!

Come and watch them work up a sweat chopping logs and trying to do it faster than their ,opposition.

Tucked in between the ring and the hall on the NABIAC Street Fence.

sponsored by



Come and watch the fabulous

Ka Boom Fireworks

Starting 8:00pm



The best way to finish your Show